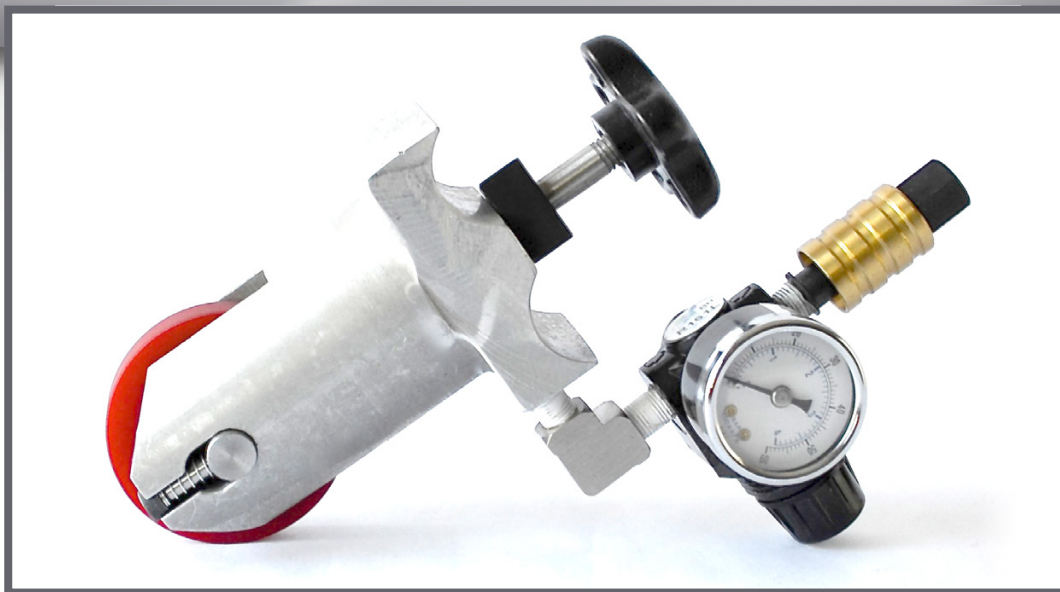


AIR TROLLEY WHEEL HOLDER ASSEMBLY

For use with Baldwin / Versa Tech / ILF angle bars, prefolders, seam gluers, pattern perforators, and plow towers



Air Slitter / Perf / Score Wheel Holder Assembly

- Standard air trolley assembly.
- Complete assembly includes elbow, air regulator and sleeve valve.
- Manufactured to meet or exceed OEM specifications.

A471-5021-01

Call for Pricing

Compare to Baldwin part#
A471-5021-01

CALL (815) 609-5544

to order or to request a complete catalog of pressroom products
All items are stocked and available for immediate shipment

WALT POWLEY INLINE, INC.

12006 Spaulding School Drive ■ Unit 105
Plainfield ■ IL ■ 60585 ■ USA
phone (815) 609-5544 ■ fax (815) 577-7106
parts@waltpowleyinline.com

WaltPowleyInlineInc.com

AIR TROLLEY WHEEL HOLDER ASSEMBLY REPLACEMENT PARTS

For use with Baldwin / Versa Tech / ILF angle bars, prefolders, seam gluers, pattern perforators, and plow towers



Cylinder Body

C-471B

- Replacement cylinder body.

Call for Pricing



Piston

M410-2243-01

- Replacement piston.
- Compare to Baldwin part# M410-2243-01.

Call for Pricing



O-Ring

P240-2020-00

- Replacement o-ring.
- Black in color.
- Compare to Baldwin part# P240-2020-00.

Call for Pricing



Wheel Pin

M410-2247-01

- Replacement wheel pin.
- Compare to Baldwin part# M410-2247-01.

Call for Pricing



Screw Pin

M410-2245-01

- Replacement screw pin.
- Two screw pins needed per assembly.
- Compare to Baldwin part# M410-2245-01.

Call for Pricing



Bearing Spacer

M410-2246-01

- Replacement bearing spacer.
- Two bearing spacers needed per assembly.
- Compare to Baldwin part# M410-2246-01.

Call for Pricing

WALT POWLEY INLINE, INC.

12006 Spaulding School Drive ■ Unit 105
Plainfield ■ IL ■ 60585 ■ USA
phone (815) 609-5544 ■ fax (815) 577-7106
parts@waltpowleyinline.com

CALL (815) 609-5544

to order or to request a complete
catalog of pressroom products
*All items are stocked and available
for immediate shipment*

WaltPowleyInlineInc.com

AIR TROLLEY WHEEL HOLDER ASSEMBLY REPLACEMENT PARTS

For use with Baldwin / Versa Tech / ILF angle bars, prefolders, seam gluers, pattern perforators, and plow towers



Spring

P290-1063-00

*Call for
Pricing*

- Replacement compression spring.
- Two springs needed per assembly.
- Compare to Baldwin part# P290-1063-00.

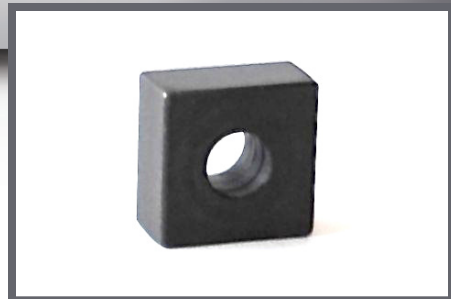


Turn Knob

K-471

*Call for
Pricing*

- Replacement mounting turn knob.



Mounting Block

MB-471

*Call for
Pricing*

- Replacement mounting block.



Elbow

P220-7150-00

*Call for
Pricing*

- Replacement elbow.
- Compare to Baldwin part# P220-7150-00.



Air Regulator

P220-4014-00

*Call for
Pricing*

- Replacement air regulator.
- Compare to Baldwin part# P220-4014-00.



Sleeve Valve

P220-3024-00

*Call for
Pricing*

- Replacement sleeve valve.
- Compare to Baldwin part# P220-3024-00.

WALT POWLEY INLINE, INC.

12006 Spaulding School Drive ■ Unit 105
Plainfield ■ IL ■ 60585 ■ USA
phone (815) 609-5544 ■ fax (815) 577-7106
parts@waltpowleyinline.com

CALL (815) 609-5544

to order or to request a complete
catalog of pressroom products
*All items are stocked and available
for immediate shipment*

WaltPowleyInlineInc.com

AIR TROLLEY WHEEL HOLDER ASSEMBLY

For use with Baldwin / Versa Tech / ILF angle bars, prefolders, seam gluers, pattern perforators, and plow towers

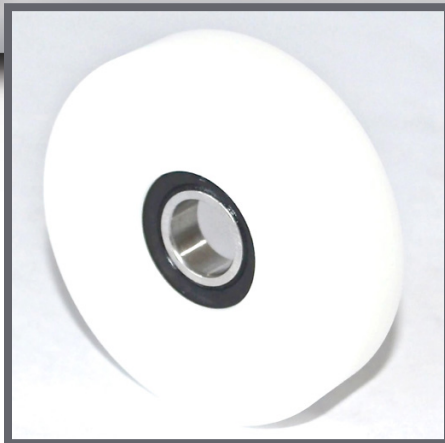


Nip Wheel
Red Polyurethane
2.50" OD

- Standard replacement air trolley wheel.
- 2.50" OD x 1.125" ID x .500" wide.
- .500" bearing ID.
- Manufactured from polyurethane and supplied with a high-quality, double sealed, R8RS low friction bearing.
- Meets or exceeds OEM specifications.

TW-250R-01

Call for Pricing

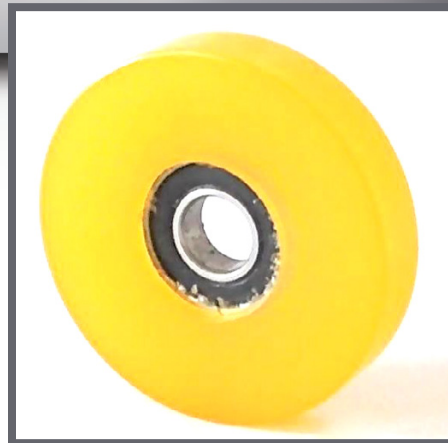


Nip Wheel
White Delrin
2.50" OD

- Standard replacement air trolley wheel.
- 2.50" OD x 1.125" ID x .500" wide.
- .500" bearing ID.
- Manufactured from delrin and supplied with a high-quality, double sealed, R8RS low friction bearing.
- Meets or exceeds OEM specifications.

TW-250W-02

Call for Pricing



Nip Wheel
Yellow Polyurethane
2.50" OD

- Standard replacement air trolley wheel.
- 2.50" OD x 1.125" ID x .500" wide.
- .500" bearing ID.
- Manufactured from polyurethane and supplied with a high-quality, double sealed, R8RS low friction bearing.
- Meets or exceeds OEM specifications.

TW-250Y-03

Call for Pricing

WALT POWLEY INLINE, INC.

12006 Spaulding School Drive ■ Unit 105
Plainfield ■ IL ■ 60585 ■ USA
phone (815) 609-5544 ■ fax (815) 577-7106
parts@waltpowleyinline.com

CALL (815) 609-5544

to order or to request a complete
catalog of pressroom products
*All items are stocked and available
for immediate shipment*

WaltPowleyInlineInc.com