



AIR TROLLEY WHEEL HOLDER ASSEMBLY

For use with Scheffer + Global Web Finishing angle bars, seam gluers, prefolders, pattern perforators, and plow towers



Air Trolley Assembly

- Standard single wheel air trolley assembly.
- 2" round bar holder frame.
- Complete assembly includes air cylinder, sleeve valve, air regulator and compression fitting.
- Manufactured to meet or exceed OEM specifications.
- Compare to Scheffer part# C41061.

C-41061

***Call or Email
for Pricing***

CALL (815) 609-5544 or EMAIL parts@waltpowleyinline.com

to order or to request a quote

All items are stocked and available for immediate shipment

WALT POWLEY INLINE, INC.

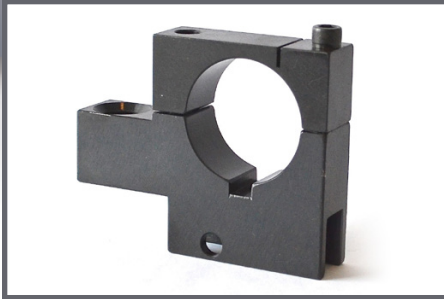
12006 Spaulding School Drive ■ Unit 105
Plainfield ■ IL ■ 60585 ■ USA
phone (815) 609-5544
parts@waltpowleyinline.com

WaltPowleyInLineInc.com



AIR TROLLEY ASSEMBLY REPLACEMENT PARTS

For use with air trolley assemblies on Scheffer + Global Web Finishing angle bars, prefolders, seam gluers, pattern perforators, and plow towers

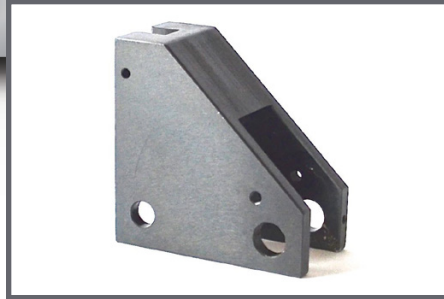


Holder Frame

Replacement 2" round bar holder frame.

F-8212

Call or Email for Pricing



Pivot Arm

Replacement pivot arm.

PA-5271

Call or Email for Pricing



Air Cylinder

Replacement air cylinder.

C-802L

Call or Email for Pricing



Axle / Nip Wheel

- Replacement nip wheel mounting axle.
- Connects nip wheel to pivot arm.

S-528A

Call or Email for Pricing



Snap Ring / Nip Wheel Axle

- Replacement snap ring for nip wheel axle.
- Two snap rings needed per assembly.

SR-1056

Call or Email for Pricing



Washer / Nip Wheel Axle

- Replacement washer for nip wheel axle.
- Two washers needed per assembly.

W-530

Call or Email for Pricing

WALT POWLEY INLINE, INC.

12006 Spaulding School Drive ■ Unit 105
Plainfield ■ IL ■ 60585 ■ USA
phone (815) 609-5544
parts@waltpowleyinline.com

CALL (815) 609-5544

to order or to request a quote
All items are stocked and available for immediate shipment

WaltPowleyInLineInc.com



AIR TROLLEY ASSEMBLY REPLACEMENT PARTS

For use with air trolley assemblies on Scheffer + Global Web Finishing angle bars, prefolders, seam gluers, pattern perforators, and plow towers



Pivot Pin

- Replacement pivot pin.
- Connects holder frame to pivot arm.

P-5345

*Call or Email
for Pricing*



Snap Ring / Pivot Pin

- Replacement snap ring for pivot pin.
- Two snap rings needed per assembly.

P-5399

*Call or Email
for Pricing*



Metal Turn Handle

Replacement metal turn handle.

H-1075

*Call or Email
for Pricing*



Piston Linkage

- Replacement air cylinder piston linkage assembly.
- Connects air cylinder to pivot arm.

L-1540

*Call or Email
for Pricing*



Roll Pin

- Replacement roll pin.
- Inserts into pivot arm.

P-529

*Call or Email
for Pricing*



Sleeve Valve

Replacement sleeve valve.

V-3W125

*Call or Email
for Pricing*

WALT POWLEY INLINE, INC.

12006 Spaulding School Drive ■ Unit 105
Plainfield ■ IL ■ 60585 ■ USA
phone (815) 609-5544
parts@waltpowleyinline.com

CALL (815) 609-5544

to order or to request a quote
*All items are stocked and available
for immediate shipment*

WaltPowleyInlineInc.com



AIR TROLLEY ASSEMBLY REPLACEMENT PARTS

For use with air trolley assemblies on Scheffer + Global Web Finishing angle bars, prefolders, seam gluers, pattern perforators, and plow towers

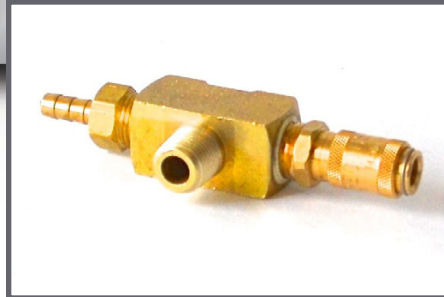


Air Regulator

Replacement air regulator.

R-20K

*Call or Email
for Pricing*



Compression Fitting

Replacement compression fitting.

D-150C

*Call or Email
for Pricing*



Pneumatic Hose Assembly

- Replacement pneumatic hose assembly.
- Includes brass air hose fittings.

H-1552A

*Call or Email
for Pricing*

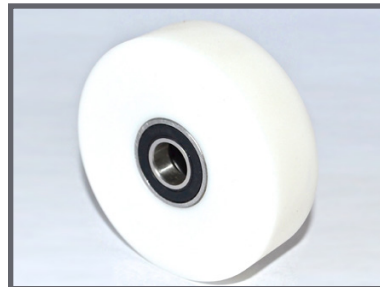


1-1897 or 1-5246

*Call or Email
for Pricing*

Nip Wheel – Rubber Covered

- For use with Scheffer + Global Web Finishing equipment.
- Replacement air trolley wheel.
- 3.00" OD x 1.102" ID x .750" wide with .475" bearing ID.
- High-quality, double sealed, 6001RS low friction bearing (quantity: 2).
- Covered with clear rubber urethane material.



TW-300W-07

*Call or Email
for Pricing*

Nip Wheel, White Delrin – 3" OD

- For use with Scheffer + Global Web Finishing equipment.
- Replacement air trolley wheel.
- 3.00" OD x 1.00" ID x .9375" wide with .475" bearing ID.
- Manufactured from delrin and supplied with high-quality, double sealed, 6001RS low friction bearings (quantity: 2).
- Meets or exceeds OEM specifications.

WALT POWLEY INLINE, INC.

12006 Spaulding School Drive ■ Unit 105
Plainfield ■ IL ■ 60585 ■ USA
phone (815) 609-5544
parts@waltpowleyinline.com

CALL (815) 609-5544

to order or to request a quote
*All items are stocked and available
for immediate shipment*

WaltPowleyInLineInc.com