



ROTARY PLOW (4.25" OD)

for use with Scheffer + Global Web Finishing plow folding equipment



Rotary Plow Assembly

For use with Scheffer 4.25" OD plow folding equipment.

- 4.25" support roller OD
- 3.625" OD double beveled rotary plow puck designed to greatly reduce gusseting, cracking, wrinkling and marking on most paper stocks.
- Precision machined and supplied with high-quality, double sealed low friction bearings to meet or exceed OEM specifications.

C21446

Call or Email for Pricing



RP-03S / C21438

Call or Email for Pricing

3.625" Diameter Plow Puck

Standard replacement plow puck for use with Scheffer rotary plows with 4.25" OD support roller.

- Precision machined and supplied with high-quality, double sealed low friction bearings to meet or exceed OEM specifications.
- Double beveled which greatly reduces gusseting, cracking, wrinkling and marking on heavier paper stocks.



C41222

Call or Email for Pricing

3.70" Diameter Plow Puck

Alternative double sided replacement plow puck for use with Scheffer rotary plows with 4.25" OD support roller.

- Precision machined and supplied with high-quality, double sealed low friction bearings to meet or exceed OEM specifications.
- Double beveled which greatly reduces gusseting, cracking, wrinkling and marking on heavier paper stocks.

WALT POWLEY INLINE, INC.

12006 Spaulding School Drive ■ Unit 105
Plainfield ■ IL ■ 60585 ■ USA
phone (815) 609-5544
parts@waltpowleyinline.com

CALL (815) 609-5544

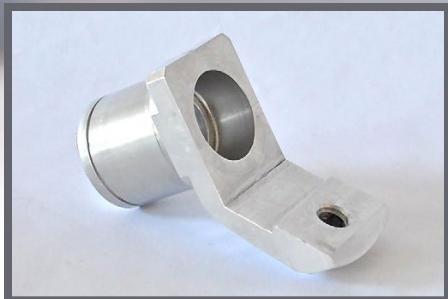
to order or to request a quote
*All items are stocked and available
for immediate shipment*

WaltPowleyInlineInc.com



ROTARY PLOW REPLACEMENT PARTS

for use with Scheffer + Global Web Finishing inline plow folding equipment



Internal Plow Puck Mounting Bracket

Internal plow puck mounting bracket for use with Scheffer rotary plows with 4.25" OD support roller.

Replacement internal housing bracket to mount rotary plow puck.

C21434

Call or Email for Pricing



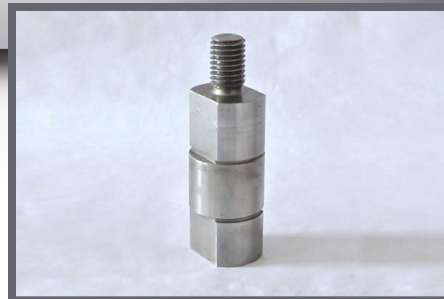
Bearing

Internal bearing for use with Scheffer rotary plows with 4.25" OD support roller.

Metal shielded low friction bearing that meets or exceeds OEM specifications.

BB-21446

Call or Email for Pricing



Threaded Extension Shaft

Threaded extension shaft for use with Scheffer rotary plows with 4.25" and 6" OD support rollers.

- 1.377" OD
- 4" overall length

B25916

Call or Email for Pricing



Pivot Stud

Threaded pivot post for use with Scheffer rotary plows with 4.25" OD support roller.

- Replacement pivot post stud.
- Screws into the internal plow puck mounting bracket.

A27320

Call or Email for Pricing



Shoulder Mounting Bolt

Shoulder mounting bolt for use with Scheffer rotary plows with 4.25" OD support roller.

Used to mount plow puck to rotary plow assembly.

MB-425

Call or Email for Pricing

WALT POWLEY INLINE, INC.

12006 Spaulding School Drive ■ Unit 105
Plainfield ■ IL ■ 60585 ■ USA
phone (815) 609-5544
parts@waltpowleyinline.com

CALL (815) 609-5544

to order or to request a quote
*All items are stocked and available
for immediate shipment*

WaltPowleyInlineInc.com