

AIR TROLLEY ASSEMBLY (DOUBLE WHEEL) REPLACEMENT PARTS

For use with WPM/AGM angle bars, prefolders, seam gluers, pattern perforators, and plow towers



Air Trolley Assembly (Double Wheel)

- Standard double wheel air trolley assembly.
- Complete assembly includes: air cylinder, male elbow swivel, male hex nipple, sleeve valve, mounting hardware and two red polyurethane nip wheels.
- Manufactured to meet or exceed OEM specifications.
- Compare to WPM part# C50034.

DW-250-01A

*Please call
for pricing*

CALL (815) 609-5544

to order or to request a complete catalog of pressroom products

All items are stocked and available for immediate shipment

WALT POWLEY INLINE, INC.

12006 Spaulding School Drive ■ Unit 105
Plainfield ■ IL ■ 60585 ■ USA
phone (815) 609-5544 ■ fax (815) 577-7106
parts@WaltPowleyInline.com

CALL (815) 609-5544

to order or to request a complete
catalog of pressroom products
*All items are stocked and available
for immediate shipment*

WaltPowleyInline.com

AIR TROLLEY ASSEMBLY (DOUBLE WHEEL) REPLACEMENT PARTS

For use with WPM/AGM angle bars, prefolders, seam gluers, pattern perforators, and plow towers

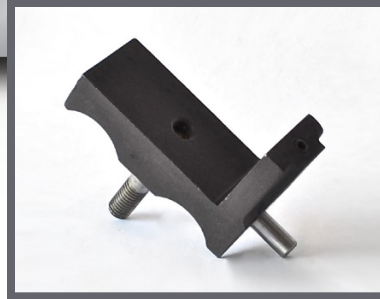


Axle

Replacement
nip wheel
mounting axle.

DW-250A-03

*Please call
for pricing*



Mounting Body

Replacement
mounting body

DW-250B-05

*Please call
for pricing*



Mounting Axle Pin

Replacement
mounting
axle pin.

DW-250P-04

*Please call
for pricing*



Retaining Snap Rings

Replacement
retaining snap
rings for nip
wheels. Four
needed per
double nip
wheel assembly.

DW-250R-06

*Please call
for pricing*



Yoke

Replacement
yoke.

DW-250Y-02

*Please call
for pricing*



Guide Pin

Replacement
harden guide
pin.

SA-250-01-06P

*Please call
for pricing*

WALT POWLEY INLINE, INC.

12006 Spaulding School Drive ■ Unit 105
Plainfield ■ IL ■ 60585 ■ USA
phone (815) 609-5544 ■ fax (815) 577-7106
parts@WaltPowleyInline.com

CALL (815) 609-5544

to order or to request a complete
catalog of pressroom products
*All items are stocked and available
for immediate shipment*

WaltPowleyInline.com

AIR TROLLEY ASSEMBLY (DOUBLE WHEEL) REPLACEMENT PARTS

For use with WPM/AGM angle bars, prefolders, seam gluers, pattern perforators, and plow towers



Sleeve Valve

Replacement sleeve valve.

TA-250-06V

*Please call
for pricing*



Hex Nipple

Replacement hex nipple.

TA-250-07N

*Please call
for pricing*



Male Elbow Swivel

Replacement male elbow swivel.

TA-250-08E

*Please call
for pricing*



Air Cylinder

Replacement air cylinder.

TA-250-09C

*Please call
for pricing*



Recoil Tubing - 1/8"

- Replacement flexible recoil air tubing used for connecting air manifold bar to individual air trolley and slitter assemblies.
- Manufactured from durable polyurethane to meet or exceed OEM specifications.

RT-125

*Please call
for pricing*

WALT POWLEY INLINE, INC.

12006 Spaulding School Drive ■ Unit 105
Plainfield ■ IL ■ 60585 ■ USA
phone (815) 609-5544 ■ fax (815) 577-7106
parts@WaltPowleyInline.com

CALL (815) 609-5544

to order or to request a complete
catalog of pressroom products
*All items are stocked and available
for immediate shipment*

WaltPowleyInlineInc.com

AIR TROLLEY ASSEMBLY (DOUBLE WHEEL) REPLACEMENT PARTS

For use with WPM/AGM angle bars, prefolders, seam gluers, pattern perforators, and plow towers

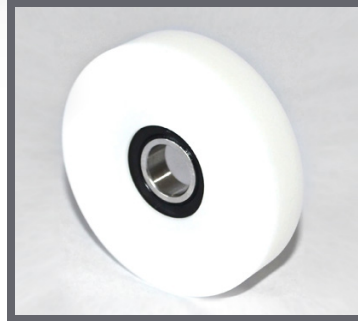


Nip Wheel
Red Polyurethane
2.50" OD

- Standard replacement air trolley wheel.
- 2.50" OD x 1.125" ID x .500" wide with .500" bearing ID.
- Manufactured from polyurethane and supplied with a high-quality, double-sealed, R8RS low friction bearing.
- Meets or exceeds OEM specifications.
- Compare to WPM part# 9024B.

TW-250R-01

*Please call
for pricing*

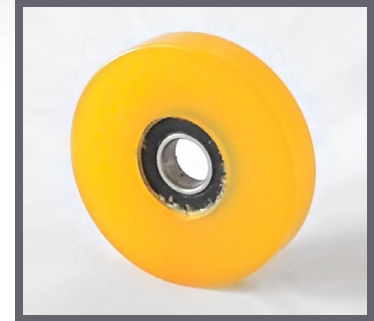


Nip Wheel
White Delrin
2.50" OD

- Standard replacement air trolley wheel.
- 2.50" OD x 1.125" ID x .500" wide with .500" bearing ID.
- Manufactured from delrin and supplied with a high-quality, double sealed, R8RS low friction bearing.
- Meets or exceeds OEM specifications.

TW-250W-02

*Please call
for pricing*



Nip Wheel
Yellow Polyurethane
2.50" OD

- Standard replacement air trolley wheel.
- 2.50" OD x 1.125" ID x .500" wide with .500" bearing ID.
- Manufactured from polyurethane and supplied with a high-quality, double sealed, R8RS low friction bearing.
- Meets or exceeds OEM specifications.

TW-250Y-03

*Please call
for pricing*

WALT POWLEY INLINE, INC.

12006 Spaulding School Drive ■ Unit 105
Plainfield ■ IL ■ 60585 ■ USA
phone (815) 609-5544 ■ fax (815) 577-7106
parts@WaltPowleyInline.com

CALL (815) 609-5544

to order or to request a complete
catalog of pressroom products
*All items are stocked and available
for immediate shipment*

WaltPowleyInline.com