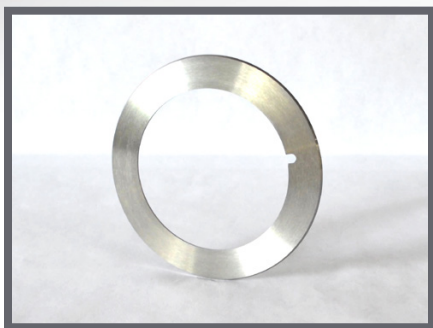


SHEAR SLITTER DISH KNIFE, ANVIL KNIFE & RETAINING SPRING

for use with WPM rotary cutter infeed shear slitter



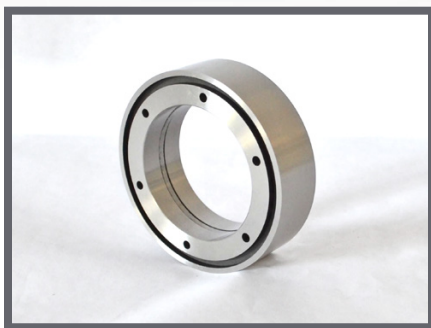
Shear Slitter Dish Knife
4.133" OD

Walt Powley Inline, Inc. dish / circular knives are manufactured to exacting tolerances from high quality D2 tool steel and include a specialized cutting edge to maximize knife life and provide superior cut quality.

- Premium dish knife.
- 4.133" OD x 2.952" ID x .047" thick with keyway.
- Compare to WPM part# 02668.

DK-4133-04

Call for Pricing



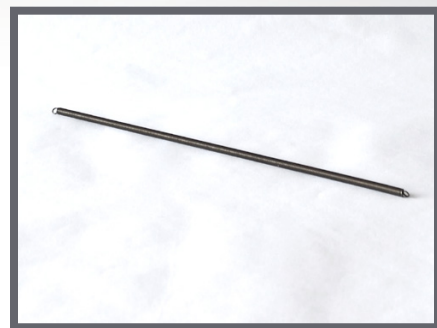
Shear Slitter Anvil Knife
3.57" OD

Walt Powley Inline, Inc. anvil knives are manufactured to exacting tolerances from high quality D2 tool steel.

- Premium anvil (bottom) knife.
- 3.57" OD x 2.36" ID x 1.00" wide.
- Center locking channel.
- Double-edged.
- Compare to WPM part# 31A.

ANV-W01

Call for Pricing



**Retaining Spring –
Dish Knife**

- Standard replacement retaining spring.
- For use with 4.133" OD dish knife.
- Compare to WPM part# 263B-400-7-200.

RS-725-01

Call for Pricing

WALT POWLEY INLINE, INC.

12006 Spaulding School Drive ■ Unit 105
Plainfield ■ IL ■ 60585 ■ USA
phone (815) 609-5544 ■ fax (815) 577-7106
parts@waltpowleyinline.com

CALL (815) 609-5544

to order or to request a complete
catalog of pressroom products
*All items are stocked and available
for immediate shipment*

WaltPowleyInlineInc.com