



KICKER WHEEL ASSEMBLY

for use with Scheffer + Global Web Finishing plow folding equipment



Kicker Wheel Assembly- 22.750"/45.500" & Various

Standard replacement kicker wheel (knock-down) assembly.

- For use with Scheffer rotary cutters with a 22.750"/45.500", 22.776"/45.552" or 22.8375"/45.675" circumference.
- Includes metal mounting collar.
- For use with full-web (16 page) delivery tables.

C26355

*Call or Email for
Pricing*



Kicker Wheel Assembly- 17.750"/35.500" & Various

Standard replacement kicker wheel (knock-down) assembly.

- For use with Scheffer rotary cutters with a 17.750"/35.500" or 17.795"/35.590" circumference.
- Includes metal mounting collar.
- For use with half-web (8-page) delivery tables.

C26356-1

*Call or Email for
Pricing*



Kicker Wheel Assembly- 630mm/1260mm & Various

Standard replacement kicker wheel (knock-down) assembly.

- For use with Scheffer rotary cutters with a 625mm/1250mm or 630mm/1260mm circumference.
- Includes metal mounting collar
- For use with full-web (16 page) delivery tables.

C26686 or C33204

*Call or Email for
Pricing*

CALL (815) 609-5544 or EMAIL parts@waltpowleyinline.com

to order or to request a quote

All items are stocked and available for immediate shipment

WALT POWLEY INLINE, INC.

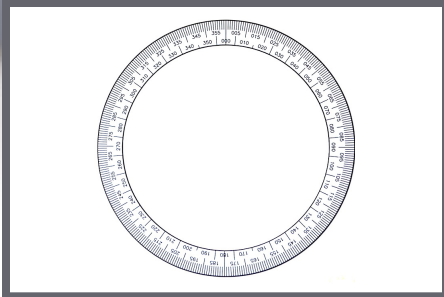
12006 Spaulding School Drive ■ Unit 105
Plainfield ■ IL ■ 60585 ■ USA
phone (815) 609-5544
parts@waltpowleyinline.com

WaltPowleyInLineInc.com



KICKER WHEEL ASSEMBLY

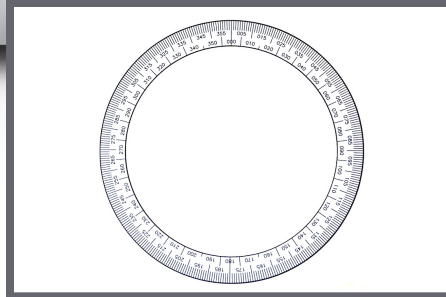
for use with Scheffer + Global Web Finishing plow folding equipment



Scale- 17.750"/35.500" & Various

- For use with 17.750"/35.500" or 17.795"/35.590" circumference kicker wheel assembly.
- 360 degree adhesive mounted replacement scale.
- For use with kicker wheel assembly Part #C26356-1

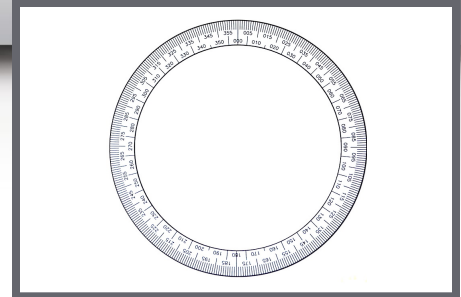
C14786
Call or Email for Pricing



Scale- 22.750"/45.500" & Various

- For use with 22.750"/45.500", 22.776"/45.552" or 22.8375"/45.675" circumference kicker wheel assembly.
- 360 degree adhesive mounted replacement scale.
- For use with kicker wheel assembly Part #C26355

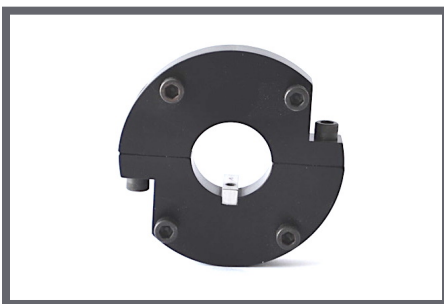
C14808
Call or Email for Pricing



Scale- 630mm/1260mm & Various

- For use with 625mm/1250mm or 630mm/1260mm circumference kicker wheel assembly.
- 360 degree adhesive mounted replacement scale.
- For use with kicker wheel assembly Part #C26686 & C33204

C14808-630
Call or Email for Pricing



B10818
Call or Email for Pricing

Mounting Collar- Split

Replacement split mounting collar for use with 17.750"/35.500" or 17.795"/35.590" circumference kicker wheel assembly.

- Standard replacement split mounting collar.
- For use with kicker wheel assembly Part #C26356-1.



B26357
Call or Email for Pricing

Mounting Collar- Split

Replacement split mounting collar for use with 22.750"/45.500", 22.776"/45.552", 22.8375"/45.675", 625mm/1250mm or 630mm/1260mm circumference kicker wheel assembly.

- Standard replacement split mounting collar.
- For use with kicker wheel assembly Part #'s C26355, C26686, & C33204.

WALT POWLEY INLINE, INC.

12006 Spaulding School Drive ■ Unit 105
Plainfield ■ IL ■ 60585 ■ USA
phone (815) 609-5544
parts@waltpowleyinline.com

CALL (815) 609-5544

to order or to request a quote
*All items are stocked and available
for immediate shipment*

WaltPowleyInlineInc.com