



NIP WHEELS

For use with Air Trolley Assemblies



TW-250-1-W

*Call or Email
for Pricing*

White Delrin – 2.50" OD

For use with WPM new style single wheel air trolley.

- Standard replacement air trolley wheel.
- 2.50" OD x 1.25" ID x .9375" wide / .475" bearing ID.
- Manufactured from delrin and supplied with high-quality, double sealed, 6201 low friction bearings. Quantity: 2.
- Meets or exceeds OEM specifications.



TW-250-2-RU

*Call or Email
for Pricing*

Red Polyurethane– 2.50" OD

For use with WPM new style single wheel air trolley.

- Standard replacement air trolley wheel.
- 2.50" OD x 1.25" ID x .9375 wide / .475" bearing ID
- Manufactured from red polyurethane and supplied with a high-quality, double sealed, 6201 low friction bearings. Quantity: 2.
- Meets or exceeds OEM specifications.



TW-250-4-P

*Call or Email
for Pricing*

Blue Urethane – 2.50" OD

For use with WPM new style single wheel air trolley.

- Standard replacement air trolley wheel.
- 2.50" OD x 1.25" ID x .9375" wide / .475" bearing ID.
- Manufactured from blue urethane and supplied with a high-quality, double sealed, 6201 low friction bearing. Quantity: 2.
- Meets or exceeds OEM specifications.



TW-250W-02

*Call or Email
for Pricing*

White Delrin – 2.50" OD

For use with WPM, AGM, Baldwin, ILF, and Versa Tech equipment.

- Standard replacement air trolley wheel.
- 2.50" OD x 1.125" ID x .500" wide / .500" bearing ID.
- Manufactured from polyurethane and supplied with a high-quality, double sealed, R8RS low friction bearing.
- Meets or exceeds OEM specifications.

WALT POWLEY INLINE, INC.

12006 Spaulding School Drive ■ Unit 105
Plainfield ■ IL ■ 60585 ■ USA
phone (815) 609-5544
parts@waltpowleyinline.com

CALL (815) 609-5544

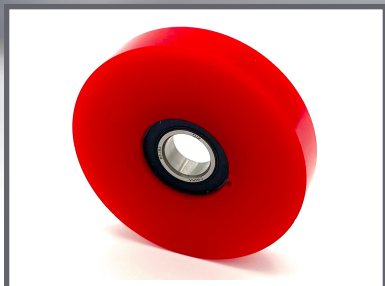
to order or to request a quote
*All items are stocked and
available for immediate shipment*

WaltPowleyInLine.com



NIP WHEELS

For use with Air Trolley Assemblies



TW-250R-01

*Call or Email
for Pricing*

Red Polyurethane- 2.50" OD

For use with WPM, AGM, Baldwin, ILF, and Versa Tech equipment.

- Standard replacement air trolley wheel.
- 2.50" OD x 1.125" ID x .500" wide / .500" bearing ID.
- Manufactured from polyurethane and supplied with a high-quality, double sealed, R8RS low friction bearing.
- Meets or exceeds OEM specifications.



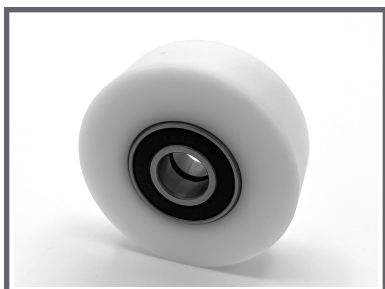
TW-250Y-03

*Call or Email
for Pricing*

Yellow Polyurethane- 2.50" OD

For use with WPM, AGM, Baldwin, ILF, and Versa Tech equipment.

- Standard replacement air trolley wheel.
- 2.50" OD x 1.125" ID x .500" wide / .500" bearing ID.
- Manufactured from polyurethane and supplied with a high-quality, double sealed, R8RS low friction bearing.
- Meets or exceeds OEM specifications.



ATW-100-04

*Call or Email
for Pricing*

White Delrin- 3.00" OD

For use with WPM rotary cutter air trolley in-feed assembly

- Standard replacement air trolley wheel.
- 3.00" OD x 1.575" ID x 1.00" wide / .669" bearing ID
- Manufactured from white delrin material and supplied with high-quality, double sealed, 6203RS low friction bearings. Quantity: 2.
- Meets or exceeds OEM specifications.



ATW-175-02

*Call or Email
for Pricing*

White Delrin- 3.00" OD

For use with WPM rotary cutter air trolley in-feed assembly.

- Standard replacement air trolley wheel.
- 3.00" OD x 1.575" ID x 1.75" wide / .669" bearing ID
- Manufactured from white delrin material and supplied with High-quality, double sealed, low friction 6203RS low friction bearings. Quantity: 2.
- Meets or exceeds OEM specifications.

WALT POWLEY INLINE, INC.

12006 Spaulding School Drive ■ Unit 105
Plainfield ■ IL ■ 60585 ■ USA
phone (815) 609-5544
parts@waltpowleyinline.com

CALL (815) 609-5544

to order or to request a quote
*All items are stocked and
available for immediate shipment*

WaltPowleyInLineInc.com



NIP WHEELS

Replacement Air Trolley Wheels for use with Scheffer, I-Web and Spec Air Trolley Assemblies

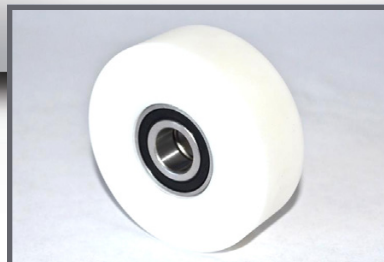


TW-300W-03

*Call or Email
for Pricing*

White Delrin – 3.00" OD

- 3.00" OD x 1.125" ID x .875" wide / .500" bearing ID.
- Manufactured from delrin and supplied with high-quality, double sealed, R8RS low friction bearings. Quantity: 2.
- Meets or exceeds OEM specifications.



TW-300W-04

*Call or Email
for Pricing*

White Delrin – 3.00" OD

- 3.00" OD x 1.375" ID x 1.00" wide / .625" bearing ID.
- Manufactured from delrin and supplied with high-quality, double sealed, 1623RS low friction bearings. Quantity: 2.
- Meets or exceeds OEM specifications.



White Delrin – 3.00" OD

- 3.00" OD x 1.102" ID x .9375" wide / .475" bearing ID.
- Manufactured from delrin and supplied with high-quality, double sealed, 6001RS low friction bearings. Quantity: 2.
- Meets or exceeds OEM specifications.

TW-300W-07

*Call or Email
for Pricing*



White Delrin – 3.00" OD

- 3.00" OD x 1.60" ID x 1.00" wide / .866" bore, no bearings.
- Manufactured from delrin.
- Meets or exceeds OEM specifications.

TW-3125W-04

*Call or Email
for Pricing*



White Delrin – 3.00" OD

- 3.00" OD x 1.60" ID x 1.00" wide / .748" bore, no bearings.
- Manufactured from delrin.
- Meets or exceeds OEM specifications.

TW-3125W-04-750

*Call or Email
for Pricing*

WALT POWLEY INLINE, INC.

12006 Spaulding School Drive ■ Unit 105
Plainfield ■ IL ■ 60585 ■ USA
phone (815) 609-5544
parts@waltpowleyinline.com

CALL (815) 609-5544

to order or to request a quote
*All items are stocked and
available for immediate shipment*

WaltPowleyInLineInc.com



NIP WHEELS

Replacement Air Trolley Wheels for use with Scheffer, Global Web Finishing, and I-Web Air Trolley Assemblies



TW-300W-08-JO

*Call or Email
for Pricing*

White Delrin – 3.00" OD

- Replacement air trolley wheel
- 3.00" OD x 1.862" ID x 1.00" wide, no bearing.
- Manufactured from delrin.
- Meets or exceeds OEM specifications.



TW-304W-01

*Call or Email
for Pricing*

White Delrin – 3.00" OD

- Replacement air trolley wheel.
- 3.04" OD x 1.374" ID x 1.117" wide, no bearings.
- Manufactured from delrin.
- Meets or exceeds OEM specifications.



Rubber Covered

- 3.00" OD x 1.102" ID x .750" wide / .475" bearing ID.
- Supplied with high-quality, double sealed, 6001RS low friction bearings. Quantity: 2.
- Covered with clear rubber urethane material
- Meets or exceeds OEM specifications.

1-1897 & 1-5246

*Call or Email
for Pricing*



Rubber Covered

- 3.150" OD x 1.70" ID x .675" wide / .748" bore, no bearings.
- Covered with green, non-marking, rubber urethane material.
- Meets or exceeds OEM specifications.

TW-3150G-01-748

*Call or Email
for Pricing*



Rubber Covered

- 3.150" OD x 1.70" ID x .675" wide / .866" bore, no bearings.
- Covered with green, non-marking, rubber urethane material.
- Meets or exceeds OEM specifications.

TW-3150G-01-866

*Call or Email
for Pricing*

WALT POWLEY INLINE, INC.

12006 Spaulding School Drive ■ Unit 105
Plainfield ■ IL ■ 60585 ■ USA
phone (815) 609-5544
parts@waltpowleyinline.com

CALL (815) 609-5544

to order or to request a quote
*All items are stocked and
available for immediate shipment*

WaltPowleyInLineInc.com