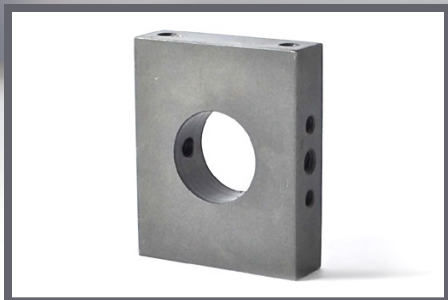




PLOW FOLDING / PLOW STEM REPLACEMENT PARTS

For use with Scheffer + Global Web Finishing plow folding equipment with a 4.25" support roller diameter



Base Mounting Plate

Precision machined to meet or exceed OEM specifications.

A20235

Call or Email for Pricing



Axle Shaft

Precision machined to meet or exceed OEM specifications.

B01545

Call or Email for Pricing



Knob

Precision machined to meet or exceed OEM specifications.

B01552

Call or Email for Pricing



Linkage - Actuating Arm

Precision machined to meet or exceed OEM specifications.

B09106 & B09110

Call or Email for Pricing



Side Plate

Precision machined to meet or exceed OEM specifications.

B20211

Call or Email for Pricing

CALL
(815) 609-5544

to order or to request a quote

All items are stocked and available for immediate shipment

WALT POWLEY INLINE, INC.

12006 Spaulding School Drive ■ Unit 105
Plainfield ■ IL ■ 60585 ■ USA
phone (815) 609-5544
parts@waltpowleyinline.com

WaltPowleyInLineInc.com



PLOW FOLDING / PLOW STEM REPLACEMENT PARTS

For use with Scheffer + Global Web Finishing plow folding equipment with a 4.25" support roller diameter



Stud Rack

- 20.5" long.
- Fits inside plow stem to connect turn knob to actuating arm.
- Precision machined to meet or exceed OEM specifications.

B20840-3

*Call or Email
for Pricing*



Block Adjustment Stop

Precision machined to meet or exceed OEM specifications.

B42700

*Call or Email
for Pricing*



Support Roller – 4.25" diameter x 1.31" wide

- 4.25" OD x 1.377" ID x 1.31" wide
- Plow stem support rollers (fit between vertical plow stem bracket).
- Fits 1.377" diameter mounting shaft.
- Precision machined and supplied with high-quality, double sealed low friction bearings to meet or exceed OEM specifications.

D20086

*Call or Email
for Pricing*



Collar

Precision machined to meet or exceed OEM specifications.

B42709

*Call or Email
for Pricing*

WALT POWLEY INLINE, INC.

12006 Spaulding School Drive ■ Unit 105
Plainfield ■ IL ■ 60585 ■ USA
phone (815) 609-5544
parts@waltpowleyinline.com

WaltPowleyInLineInc.com