



## AIR TROLLEY ASSEMBLY (DOUBLE WHEEL)

*For use with WPM/AGM angle bars, prefolders, seam gluers, pattern perforators, and plow towers*



### Air Trolley Assembly (Double Wheel)

- Standard double wheel air trolley assembly.
- Complete assembly includes: air cylinder, male elbow swivel, male hex nipple, sleeve valve, mounting hardware and two red polyurethane nip wheels.
- Manufactured to meet or exceed OEM specifications.
- Compare to WPM part# C50034.

DW-250-01A

**Call or Email for  
Pricing**

**CALL (815) 609-5544 or EMAIL [parts@waltpowleyinline.com](mailto:parts@waltpowleyinline.com)**

to order or to request a quote

***All items are stocked and available for immediate shipment***

### WALT POWLEY INLINE, INC.

12006 Spaulding School Drive ■ Unit 105  
Plainfield ■ IL ■ 60585 ■ USA  
phone (815) 609-5544  
[parts@WaltPowleyInline.com](mailto:parts@WaltPowleyInline.com)

**WaltPowleyInlineInc.com**



# AIR TROLLEY ASSEMBLY (DOUBLE WHEEL) REPLACEMENT PARTS

For use with WPM/AGM angle bars, prefolders, seam gluers, pattern perforators, and plow towers

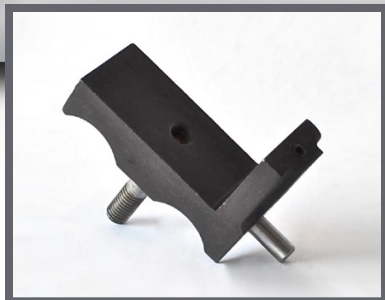


**Axle**

Replacement  
nip wheel  
mounting axle.

**DW-250A-03**

*Call or Email  
for Pricing*



**Mounting Body**

Replacement  
mounting body

**DW-250B-05**

*Call or Email  
for Pricing*



**Mounting Axle Pin**

Replacement  
mounting  
axle pin.

**DW-250P-04**

*Call or Email  
for Pricing*



**Retaining Snap Rings**

Replacement  
retaining snap  
rings for nip  
wheels. Four  
needed per  
double nip  
wheel assembly.

**DW-250R-06**

*Call or Email  
for Pricing*



**Yoke**

Replacement  
yoke.

**DW-250Y-02**

*Call or Email  
for Pricing*



**Guide Pin**

Replacement  
harden guide  
pin.

**SA-250-01-06P**

*Call or Email  
for Pricing*

**WALT POWLEY INLINE, INC.**

12006 Spaulding School Drive ■ Unit 105  
Plainfield ■ IL ■ 60585 ■ USA  
phone (815) 609-5544  
parts@WaltPowleyInline.com

**CALL (815) 609-5544**

to order or to request a quote  
*All items are stocked and available  
for immediate shipment*

**WaltPowleyInline.com**



# AIR TROLLEY ASSEMBLY (DOUBLE WHEEL) REPLACEMENT PARTS

For use with WPM/AGM angle bars, prefolders, seam gluers, pattern perforators, and plow towers



## Sleeve Valve

Replacement sleeve valve.

TA-250-06V

*Call or Email  
for Pricing*



## Hex Nipple

Replacement hex nipple.

TA-250-07N

*Call or Email  
for Pricing*



## Male Elbow Swivel

Replacement male elbow swivel.

TA-250-08E

*Call or Email  
for Pricing*



## Air Cylinder

Replacement air cylinder.

TA-250-09C

*Call or Email  
for Pricing*



## Recoil Tubing - 1/8"

- Replacement flexible recoil air tubing used for connecting air manifold bar to individual air trolley and slitter assemblies.
- Manufactured from durable polyurethane to meet or exceed OEM specifications.

RT-125

*Call or Email  
for Pricing*

## WALT POWLEY INLINE, INC.

12006 Spaulding School Drive ■ Unit 105  
Plainfield ■ IL ■ 60585 ■ USA  
phone (815) 609-5544  
parts@WaltPowleyInline.com

**CALL (815) 609-5544**

to order or to request a quote  
*All items are stocked and available  
for immediate shipment*

**WaltPowleyInlineInc.com**



# AIR TROLLEY ASSEMBLY (DOUBLE WHEEL) REPLACEMENT PARTS

*For use with WPM/AGM angle bars, prefolders, seam gluers, pattern perforators, and plow towers*

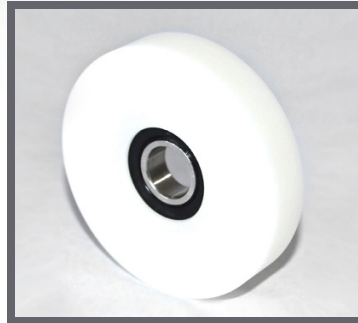


**Nip Wheel  
Red Polyurethane  
2.50" OD**

- Standard replacement air trolley wheel.
- 2.50" OD x 1.125" ID x .500" wide with .500" bearing ID.
- Manufactured from polyurethane and supplied with a high-quality, double-sealed, R8RS low friction bearing.
- Meets or exceeds OEM specifications.
- Compare to WPM part# 9024B.

TW-250R-01

**Call or Email  
for Pricing**

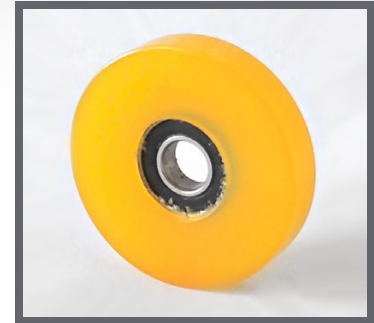


**Nip Wheel  
White Delrin  
2.50" OD**

- Standard replacement air trolley wheel.
- 2.50" OD x 1.125" ID x .500" wide with .500" bearing ID.
- Manufactured from delrin and supplied with a high-quality, double sealed, R8RS low friction bearing.
- Meets or exceeds OEM specifications.

TW-250W-02

**Call or Email  
for Pricing**



**Nip Wheel  
Yellow Polyurethane  
2.50" OD**

- Standard replacement air trolley wheel.
- 2.50" OD x 1.125" ID x .500" wide with .500" bearing ID.
- Manufactured from polyurethane and supplied with a high-quality, double sealed, R8RS low friction bearing.
- Meets or exceeds OEM specifications.

TW-250Y-03

**Call or Email  
for Pricing**

## WALT POWLEY INLINE, INC.

12006 Spaulding School Drive ■ Unit 105  
Plainfield ■ IL ■ 60585 ■ USA  
phone (815) 609-5544  
parts@WaltPowleyInline.com

**CALL (815) 609-5544**

to order or to request a quote  
*All items are stocked and available  
for immediate shipment*

**WaltPowleyInlineInc.com**