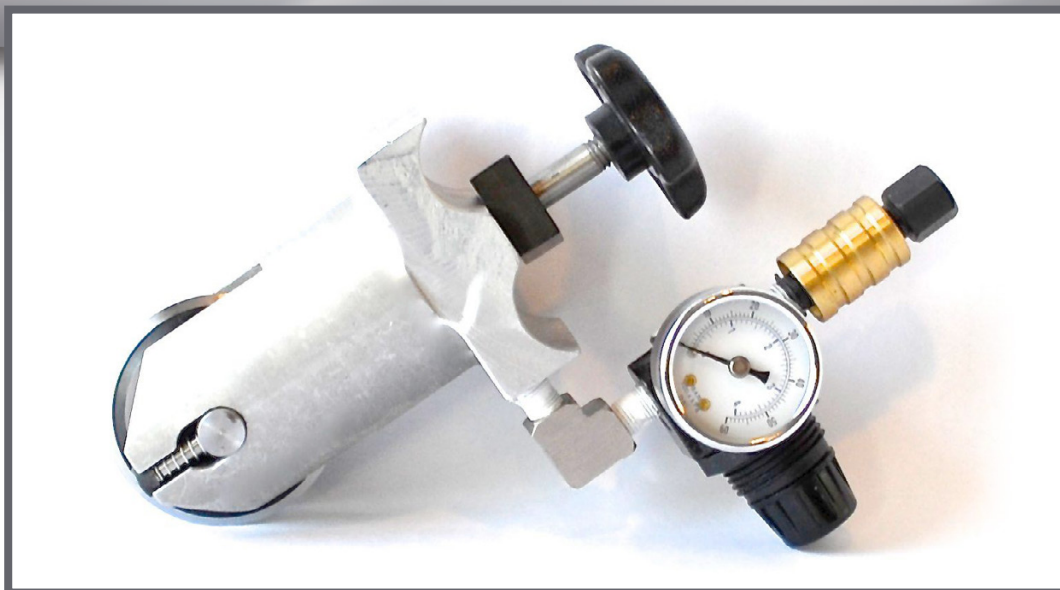




## AIR SLITTER / PERF / SCORE WHEEL HOLDER ASSEMBLY

*For use with Baldwin / Versa Tech / ILF angle bars, prefolders, seam gluers, pattern perforators, and plow towers*



### Air Slitter / Perf / Score Wheel Holder Assembly

- Standard slitter / perf / score wheel air trolley assembly.
- Complete assembly includes elbow, air regulator and sleeve valve.
- Manufactured to meet or exceed OEM specifications.

A471-5021-03

*Call or Email  
for Pricing*

Compare to Baldwin part#  
A471-5021-03

**CALL (815) 609-5544 or EMAIL [parts@waltpowleyinline.com](mailto:parts@waltpowleyinline.com)**

to order or to request a quote

*All items are stocked and available for immediate shipment*

### WALT POWLEY INLINE, INC.

12006 Spaulding School Drive ■ Unit 105  
Plainfield ■ IL ■ 60585 ■ USA  
phone (815) 609-5544  
[parts@waltpowleyinline.com](mailto:parts@waltpowleyinline.com)

**WaltPowleyInLineInc.com**



# AIR SLITTER / PERF / SCORE WHEEL HOLDER REPLACEMENT PARTS

For use with Baldwin / Versa Tech / ILF angle bars, prefolders, seam gluers, pattern perforators, and plow towers



## Cylinder Body

- Replacement cylinder body.

**C-471B**

*Call or Email  
for Pricing*



## Piston

- Replacement piston.
- Compare to Baldwin part# M410-2243-01.

**M410-2243-01**

*Call or Email  
for Pricing*



## O-Ring

- Replacement o-ring.
- Black in color.
- Compare to Baldwin part# P240-2020-00.

**P240-2020-00**

*Call or Email  
for Pricing*



## Wheel Pin

- Replacement wheel pin.
- Compare to Baldwin part# M410-2247-01.

**M410-2247-01**

*Call or Email  
for Pricing*



## Screw Pin

- Replacement screw pin.
- Two screw pins needed per assembly.
- Compare to Baldwin part# M410-2245-01.

**M410-2245-01**

*Call or Email  
for Pricing*



## Bearing Spacer

- Replacement bearing spacer.
- Two bearing spacers needed per assembly.
- Compare to Baldwin part# M410-2246-01.

**M410-2246-01**

*Call or Email  
for Pricing*

## WALT POWLEY INLINE, INC.

12006 Spaulding School Drive ■ Unit 105  
Plainfield ■ IL ■ 60585 ■ USA  
phone (815) 609-5544  
parts@waltpowleyinline.com

**CALL (815) 609-5544**

to order or to request a quote  
*All items are stocked and available  
for immediate shipment*

**WaltPowleyInlineInc.com**



# AIR SLITTER / PERF / SCORE WHEEL HOLDER REPLACEMENT PARTS

For use with Baldwin / Versa Tech / ILF angle bars, prefolders, seam gluers, pattern perforators, and plow towers



## Spring

- Replacement compression spring.
- Two springs needed per assembly.
- Compare to Baldwin part# P290-1063-00.

**P290-1063-00**

*Call or Email  
for Pricing*

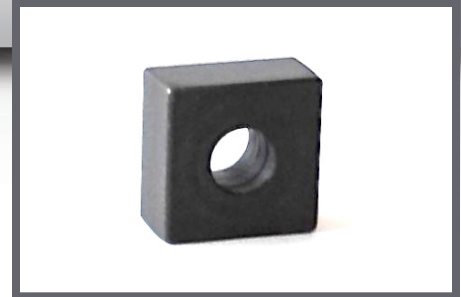


## Turn Knob

- Replacement mounting turn knob.

**K-471**

*Call or Email  
for Pricing*



## Mounting Block

- Replacement mounting block.

**MB-471**

*Call or Email  
for Pricing*



## Elbow

- Replacement elbow.
- Compare to Baldwin part# P220-7150-00.

**P220-7150-00**

*Call or Email  
for Pricing*



## Air Regulator

- Replacement air regulator.
- Compare to Baldwin part# P220-4014-00.

**P220-4014-00**

*Call or Email  
for Pricing*



## Sleeve Valve

- Replacement sleeve valve.
- Compare to Baldwin part# P220-3024-00.

**P220-3024-00**

*Call or Email  
for Pricing*

## WALT POWLEY INLINE, INC.

12006 Spaulding School Drive ■ Unit 105  
Plainfield ■ IL ■ 60585 ■ USA  
phone (815) 609-5544  
parts@waltpowleyinline.com

**CALL (815) 609-5544**

to order or to request a quote  
*All items are stocked and available  
for immediate shipment*

**WaltPowleyInlineInc.com**