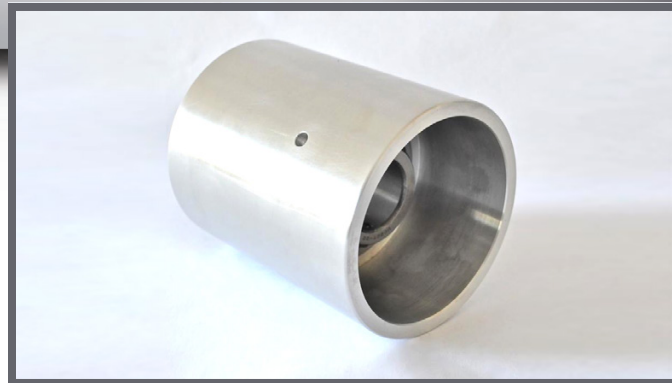
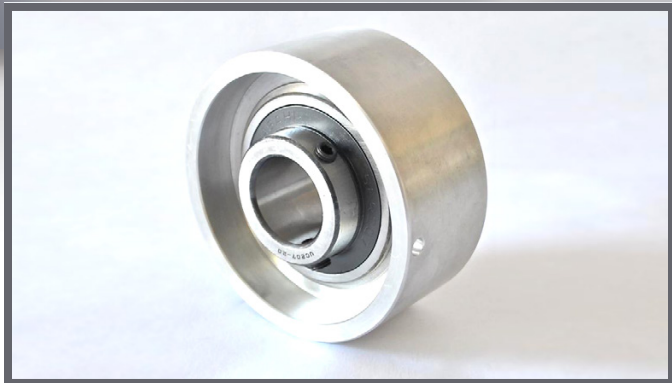




# SUPPORT ROLLERS: AGM & WPM

*For use with Vits and WPM / AGM plow folding equipment with a 4.187" support roller diameter*



## Support Roller – 1.875" Wide

Support roller segment for use with Vits and WPM/ AGM plow folding equipment.

- 4.187" OD x 1.25" ID x 1.875" Wide
- Fits 1.25" diameter mounting shaft.
- Precision machined and supplied with high-quality, double sealed low friction bearings to meet or exceed OEM specifications.

SR-1

*Call or Email  
for Pricing*

## Support Roller – 5" Wide

Support roller segment for use with Vits and WPM/ AGM plow folding equipment.

- 4.187" OD x 1.25" ID x 5" Wide
- Fits 1.25" diameter mounting shaft.
- Precision machined and supplied with high-quality, double sealed low friction bearings to meet or exceed OEM specifications.

SR-5

*Call or Email  
for Pricing*

**CALL (815) 609-5544 or EMAIL [parts@waltpowleyinline.com](mailto:parts@waltpowleyinline.com)**

to order or to request a quote

*All items are stocked and available for immediate shipment*

## WALT POWLEY INLINE, INC.

12006 Spaulding School Drive ■ Unit 105  
Plainfield ■ IL ■ 60585 ■ USA  
phone (815) 609-5544  
[parts@waltpowleyinline.com](mailto:parts@waltpowleyinline.com)

**WaltPowleyInLineInc.com**